

Oakland Township EMS Response Time

Importance of

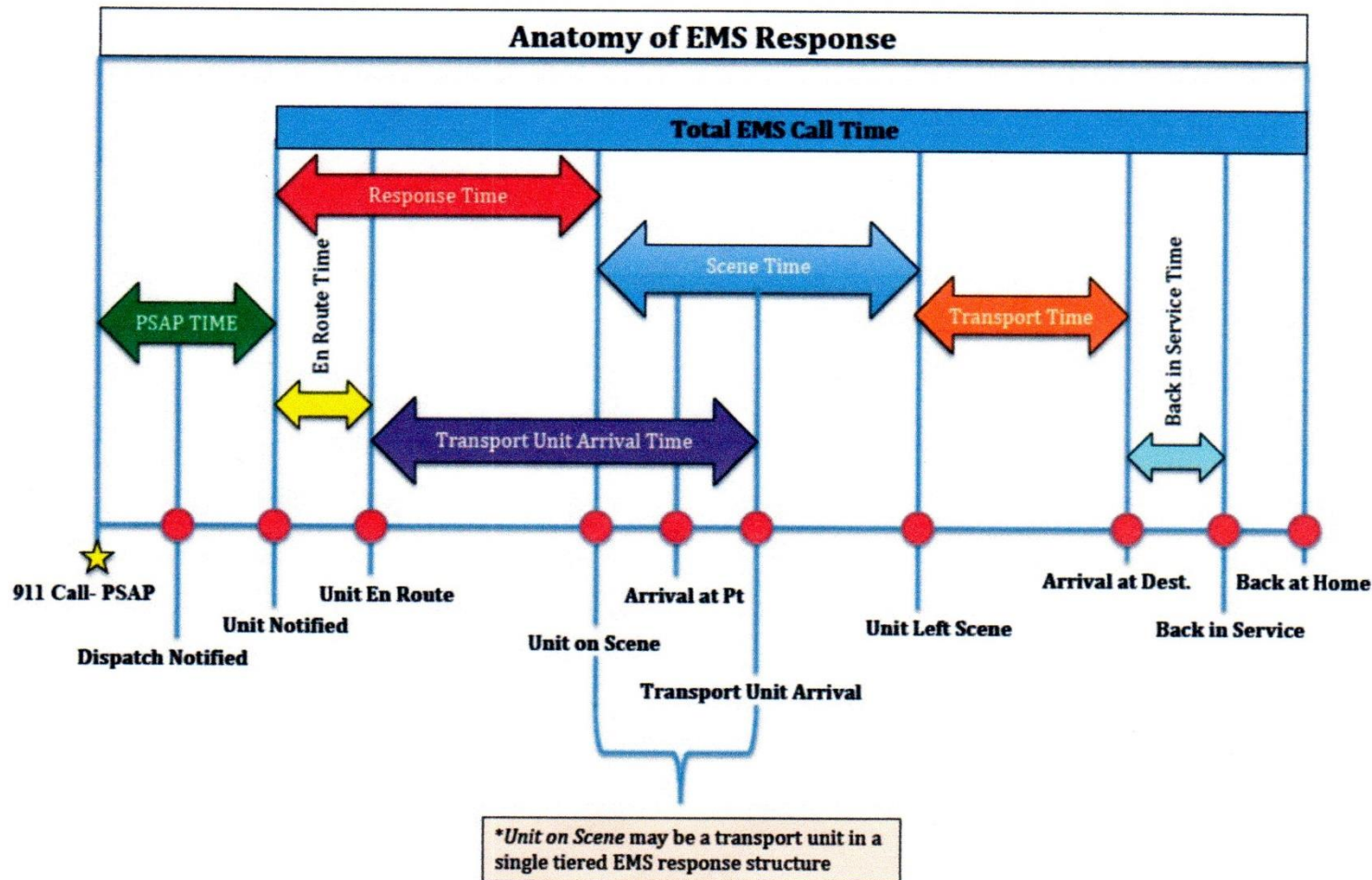
- monitoring 90% fractiles, not averages
- correct definition of start and stop of clock

Definition of Response Time

- No universally accepted national definition of clock start and stop nor of terminology
- Oakland County Medical Control Authority (OCMCA) Defines for OTFD in next slide in their Protocol 6-18, page 6.

<http://www.ocmca.org/wp-content/uploads/2016/08/6-18-EMS-Response-Time-Standards.pdf>

OCMCA Response Time Component Definitions – (we should track red arrow)



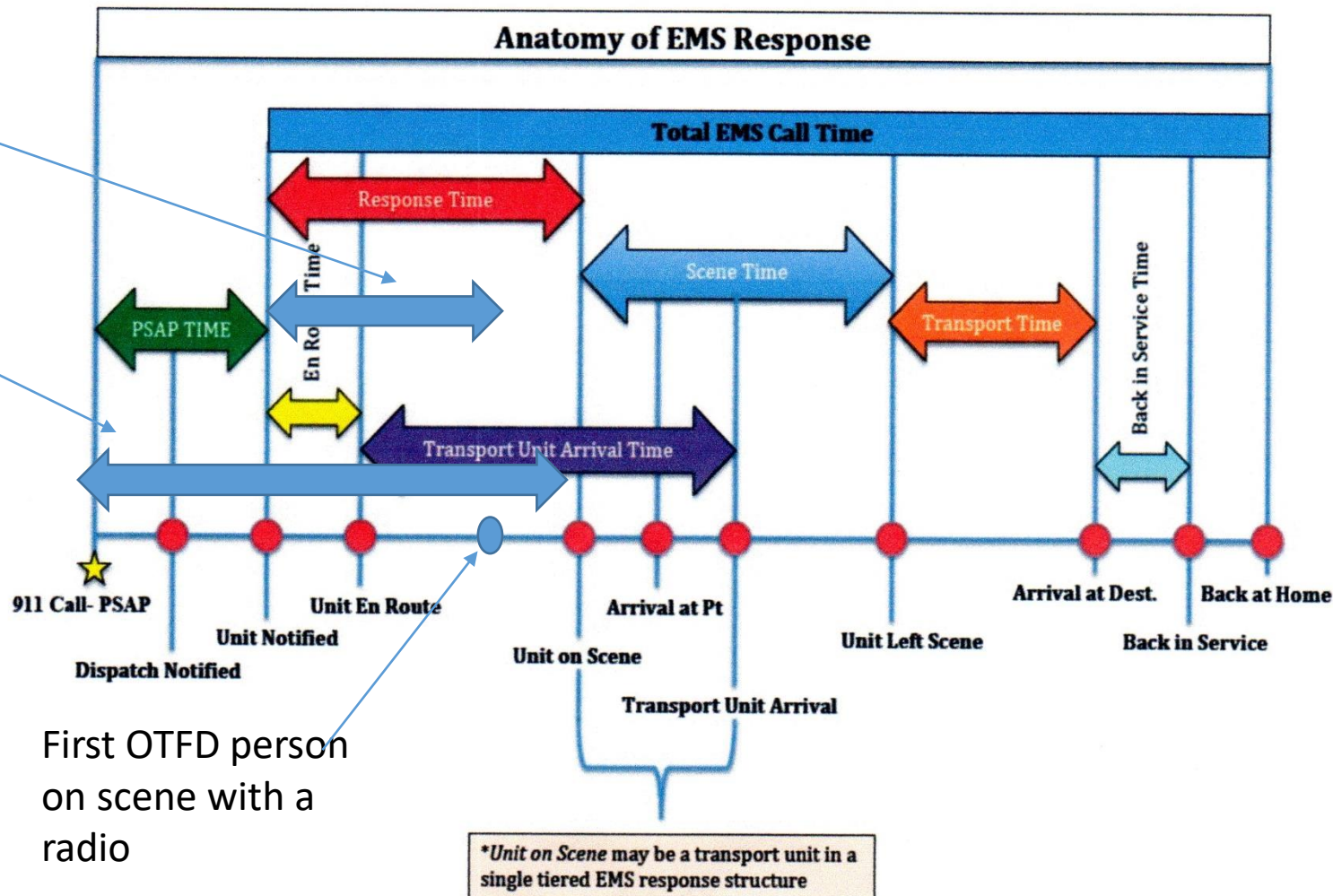
Why Pay Attention To OCMCA?

- OTFD is a Life Support Agency licensed to provide specific medical services by OCMCA under State Law Act 368 of 1978
- Must meet OCMCA requirements to stay licensed. See OCMCA Protocol 6-1 for details of obtaining and keeping our license.
- <http://www.ocmca.org/wp-content/uploads/2016/08/6-1-Agency-and-EMS-Personnel-Criteria-for-Participation.pdf>

OTFD & Houston Response Time Component Definitions (we incorrectly track the blue arrow)

OTFD Response Time as we now calculate

Houston Fire Dept Response Time



First OTFD person on scene with a radio

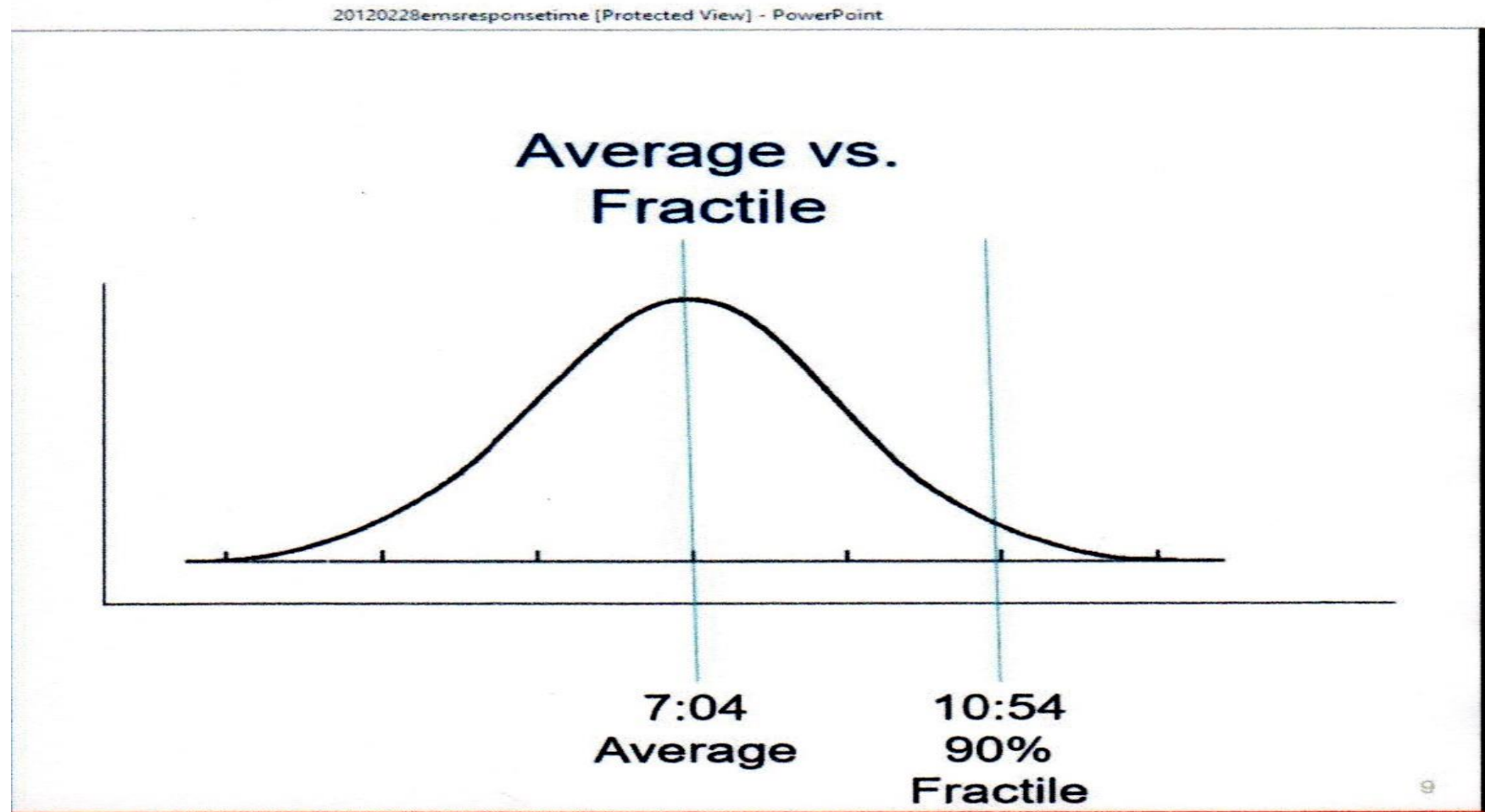
Average OTFD EMS Response Time

- (6.8 minutes) (period 10/13/16-10/13/17)

Data from 10/13/17 two page report “Average Response Time by to Section and Incident Type”. (Email D. Stewart to R. Yager 10/25/17)

City of Houston Texas EMS Response Times – includes what OCMCA calls PSAP time (green bar on slide 3)

<http://www.slideserve.com/alexa-brooks/fire-based-ems>



What slows OTFD response time?

- Multitasking by lone ambulance driver slow safe driving speed
 - Research route to address
 - Watch for traffic
 - Additional instructions from dispatch or Crittenton, en-route
- Unit on scene requires both OTFD ambulances A-1 and A-2 to arrive on scene to achieve legal necessary min. manpower of 2 paramedic or 1 paramedic / 1 EMT.
- Condition of Gallagher and Silverbell roads.
- Lack of visible address markers

Conclusions

- **We need to know and track proper OCMCA EMS response time 90% fractile data.**
- **To do that we need to calculate individual response times correctly and analyze all data.**
- **I'd be glad to help and have FOIA'd some data on an OTFD experiment from late 2015 to early 2016. This data has both current incorrect OTFD method and correct OCMCA method.**